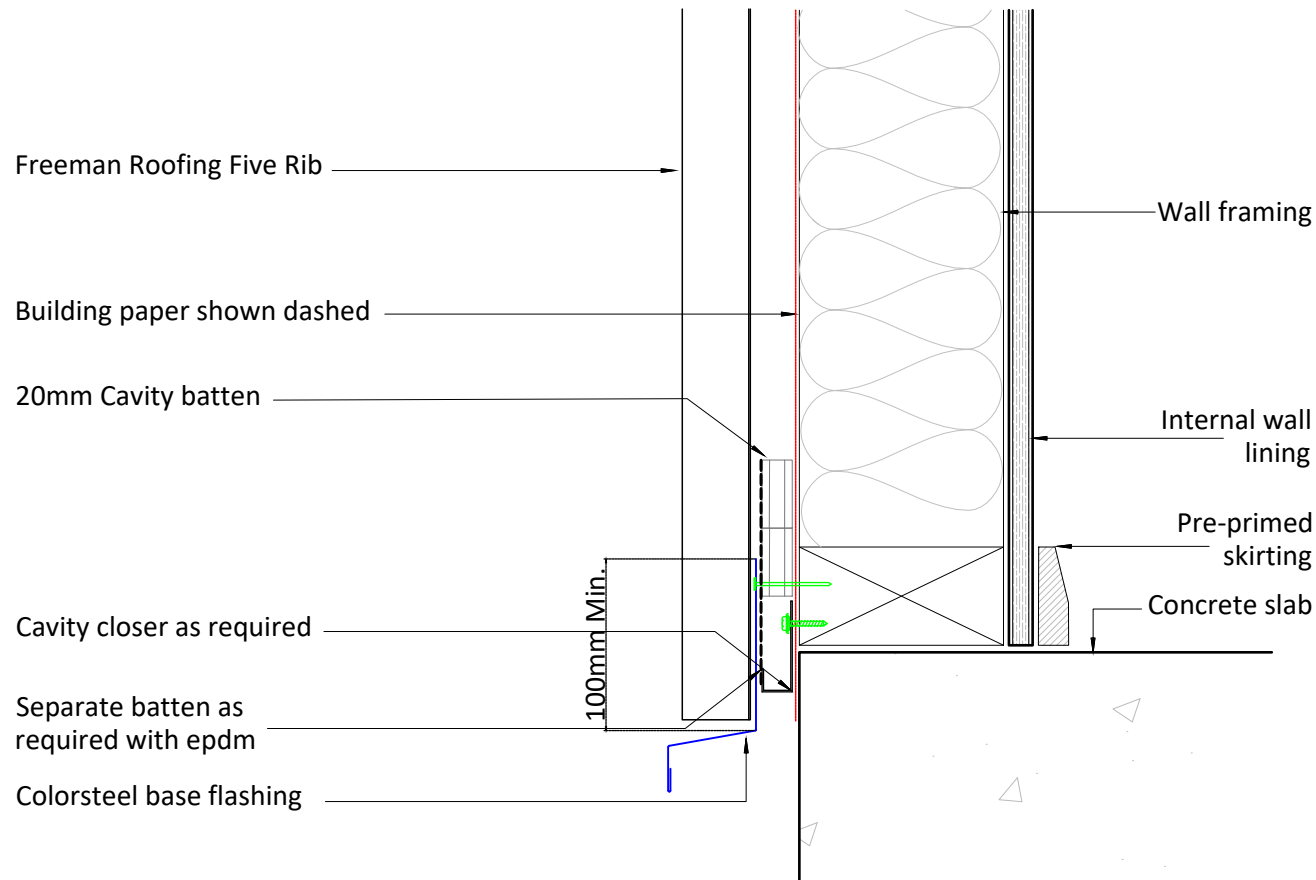


Freeman Roofing Five Rib	
0.4mm	Colorsteel® Endura
0.55mm	Colorsteel® Endura
0.4mm	Colorsteel® Maxx
0.55mm	Colorsteel® Maxx
0.4mm	Zincalume®
0.55mm	Zincalume®



Notes:

Purpose:

Wall base flashings are used at the bottom of the wall cladding to prevent water ingress at the base and to direct water away from the building structure.

Material:

Use durable, non-corrosive materials such as galvanized steel, aluminum, or copper, ensuring compatibility with the wall cladding materials.

Design:

Design the flashing to extend beneath the wall cladding and out over the building foundation or roof surface.

Installation:

Install the base flashing beneath the wall cladding and over the building's damp proof course.

Sealing:

Use a high-quality sealant or flashing tape at the top edge to ensure a watertight seal against the wall cladding.

Inspection and Maintenance:

Regularly inspect the flashings for damage or deterioration and maintain the sealant as needed.